

# Installation Guide

Version 15.1

Altair **License Server**<sup>™</sup>





Altair Engineering, Inc. makes no representation or warranties with respect to the contents of this manual or the associated software and especially disclaims any implied warranties of merchantability or fitness for any particular purpose. Further, Altair Engineering, Inc. reserves the right to revise this publication and make changes from time to time to its contents without obligation to notify anyone of such revisions or changes.

Datawatch License Server software is offered and is to be used in accordance with a SOFTWARE LICENSE AND MAINTENANCE AGREEMENT. This agreement stipulates that this software be used only in the computer system designated in that agreement. The agreement further stipulates that the customer shall not copy or alter, or permit others to copy or alter, the software or related materials in whole or in part, in any media for any purpose, except to make an archive (back-up) copy or to make a copy as an essential step in the use of the software with the customer's computer.

Altair Engineering, Inc. hereby grants the buyer the right to reprint this documentation for internal uses only. No part of this publication may be reproduced, stored in a retrieval system, or transmitted in any form or by any means, electronic, mechanical, photocopying, recording, or otherwise, for any other purposes, without the prior written permission of Altair Engineering, Inc.

*Datawatch License Server Version 15.1 Installation Guide*

Copyright © 2019 by Altair Engineering, Inc.

All rights reserved. Printed in the U.S.A.

Unpublished - Rights reserved under the copyright law of the United States.

Datawatch License Server is a trademark of Altair Engineering, Inc.. Other products mentioned herein may be trademarks or registered trademarks of their respective owners in the United States or other countries.

For U.S. Government End Users, the software is a "Commercial Item(s)," as that term is defined at 48 C.F.R. Section 2.101, consisting of "Commercial Computer Software" and "Commercial Computer Software Documentation," as such terms are used in 48 C.F.R. Section 12.212 or 48 C.F.R. Section 227.7202, as applicable. Consistent with 48 C.F.R. Section 12.212 or 48 C.F.R. Sections 227.7202-1 through 227.7202-4, as applicable, the Commercial Computer Software and Commercial Computer Software Documentation are being licensed to U.S. Government end users (a) only as Commercial Items and (b) with only those rights as are granted to all other end users pursuant to the Datawatch Software License and Maintenance Agreement.

## **VENTES**

ÉTATS-UNIS : + 1.800.445.3311

International : + 1.978.441.2200

## **Courriel Ventes**

ÉTATS-UNIS : [sales@datawatch.com](mailto:sales@datawatch.com)

Europe : [sales\\_euro@datawatch.com](mailto:sales_euro@datawatch.com)

Asie-Pacifique : [sales\\_apac@datawatch.com](mailto:sales_apac@datawatch.com)

## **SUPPORT**

Portail Client : <https://support.datawatch.com>

Courriel : [support@datawatch.com](mailto:support@datawatch.com)

ÉTATS-UNIS : +1 800.988.4739

International : +1 978.275.8350



# Table of Contents

<b>About Datawatch License Server v15.1 .....</b>	<b>1</b>
New Features in this Version.....	1
<b>Before You Begin.....</b>	<b>2</b>
Software Requirements .....	2
Approved Software Versions .....	3
Hardware Requirements .....	3
<b>Datawatch License Server v15.1 Installation.....</b>	<b>4</b>
<b>Installation Maintenance.....</b>	<b>13</b>
Adding or Removing Components.....	13
Repairing a Damaged Installation.....	16
Uninstalling the Application.....	17
<b>Upgrading Your License Server Installation.....</b>	<b>18</b>
<b>Configuration.....</b>	<b>19</b>
Datawatch License Server Service .....	19
Datawatch License Server Configuration Utility .....	20



# About Datawatch License Server v15.1

Datawatch License Server v15.1 is a licensing management application for Monarch.

Licenses for users are managed through instances. An instance defines the product and the license to which a user is entitled access. When a user attempts to log into Monarch, the application calls Datawatch License Server by instance name and checks whether this user exists within this instance. If the user does exist, he or she is authorized to log in and the license that this user is entitled to is automatically applied.

The Datawatch License Server v15.1 application consists of two components:

- ❑ **License Service** - The service that handles all interactions between the Datawatch products and the application database that stores data about the instances, licenses, and users.
- ❑ **Configuration Utility** - The desktop application that allows managing instances, licenses, and users.

Datawatch License Server is a distributable application, which means that you can install both components onto one machine or you can install them separately onto two different machines within a network.

Note that this version of License Server supports Monarch versions 14.1 and later, including Monarch versions 15+.

For information about how to use Datawatch License Server v15.1 to manage user licenses, refer to the [Datawatch License Server v15.1 User Guide](#).

## New Features in this Version

- ❑ Implementation of Administrative Policy Settings
- ❑ Cross-instance administration (for user management and reporting)
- ❑ Automatic license check-out
- ❑ Generation of checked-out users reports
- ❑ "Pure" instance administrators no longer consume a license
- ❑ Implementation of a "Require AD Authentication" option
- ❑ Wildcard support for ConfigMachineNames in the license file
- ❑ Check Machine Name functionality for license creation

# Before You Begin

Before you begin the installation, make sure that your system meets the requirements listed in [Software Requirements](#) below. Also, check the section [Approved Software Versions](#) for software on which Datawatch License Server v15.1 was tested.

You must either be logged on as a local administrator of the machine to which you are going to install Datawatch License Server v15.1 or turn off the UAC (User Account Control) component of your Windows OS before installation.

If you wish to import users from Active Directory, ensure that you have credentials available that can import from the desired domain or domains. If you wish to use Active Directory authentication for License Server users, ensure that you use the appropriate credentials for the License Server Service account.

Optionally select and open the port in Windows Firewall that will be used by Datawatch License Server v15.1 so that clients can access it. By default, port 51515 is used. The installation program can perform this configuration step for Windows Firewall, but not for 3<sup>rd</sup> party firewalls.

## Software Requirements

The following software are required for correct installation and operation of Datawatch License Server v15.1:

- ❑ .NET framework 4.5.2 32/64-bit
- ❑ Operating systems:
  - Windows Server 2008 R2 64-bit
  - Windows Server 2012 32/64-bit
  - Windows Server 2012 R2 64-bit
  - Windows Server 2016
  - Windows 7 32/64-bit (For Configuration Utility, not advisable for the License Service)
  - Windows 8 32/64-bit (For Configuration Utility, not advisable for the License Service)
  - Windows 8.1 32/64-bit (For Configuration Utility, not advisable for the License Service)

To successfully run License Server, we suggest that your system meet or exceed the recommended specifications.



# Approved Software Versions

Datawatch License Server v15.1 was tested with the following software versions:

SOFTWARE	VERSION
Operating System	Windows Server 2008 R2 Standard 64-bit Windows Server 2012 Standard 32/64-bit Windows Server 2012 R2 Standard 64-bit Windows Server 2016 Windows 7 32/64-bit Windows 8 32/64-bit Windows 8.1 32/64-bit
.NET Framework	4.5.2

# Hardware Requirements

HARDWARE	SPECIFICATIONS
Processor	Minimum: Dual core 2.0 GHz processor Recommended: Quad-core 3.5 GHz processor with 6 MB cache (or faster)  For deployments of over 500 users, please contact Datawatch Professional Services
Memory	4 GB RAM (minimum; up to 10 users) 8 GB RAM (up to 500 users)  For deployments of over 500 users, please contact Datawatch Professional Services
Network adapter	Minimum: 100 Mbps Recommended: 1 GbE
Hard drive space	Minimum: 2 GB for the application and data  Actual disk size will increase based on number of users and usage frequency

# Datawatch License Server v15.1 Installation

This section describes how to install the Datawatch License Server v15.1 components. Datawatch License Server can be installed interactively using the Setup Wizard and via the command line. To see the command line switches, use the following command:

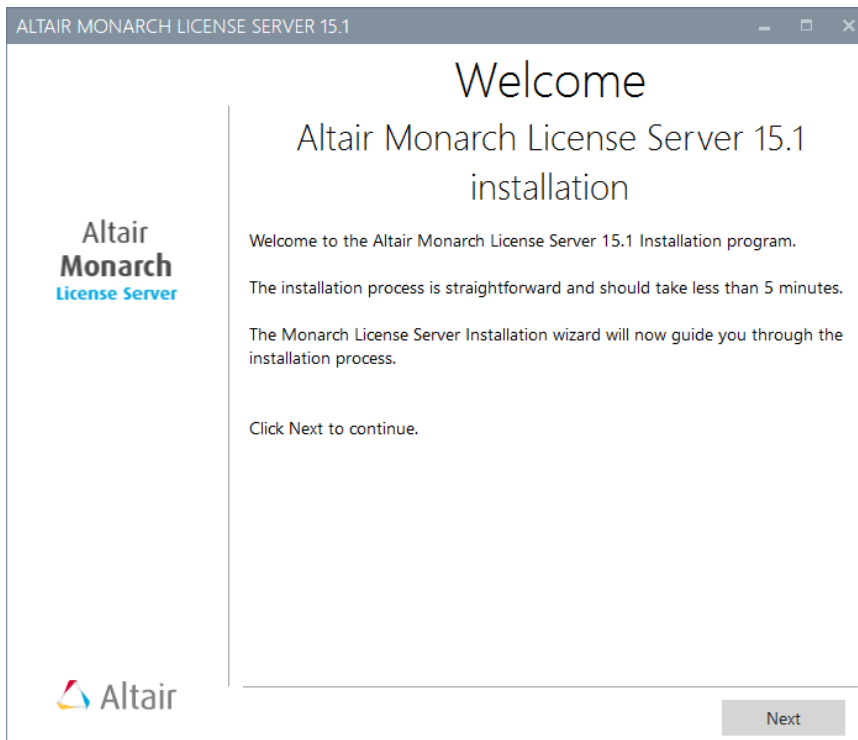
`DatawatchLicenseServer15Installer.exe /?`

Advanced deployment documentation is available separately. Please contact Support or your Professional Services contact for more information.

To ensure successful installation, make sure that you meet all requirements specified in the section [Before You Begin](#).

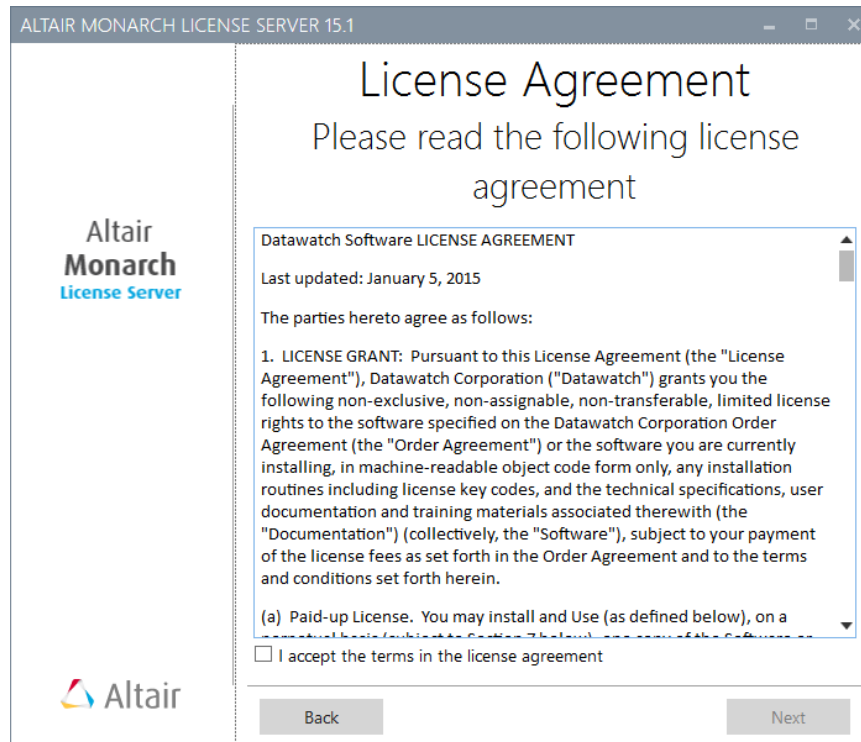
## Steps:

1. In the directory with the installation files, double-click the **DatawatchLicenseServer15Installer.exe** file to start the Datawatch License Server v15.1 Setup Wizard.



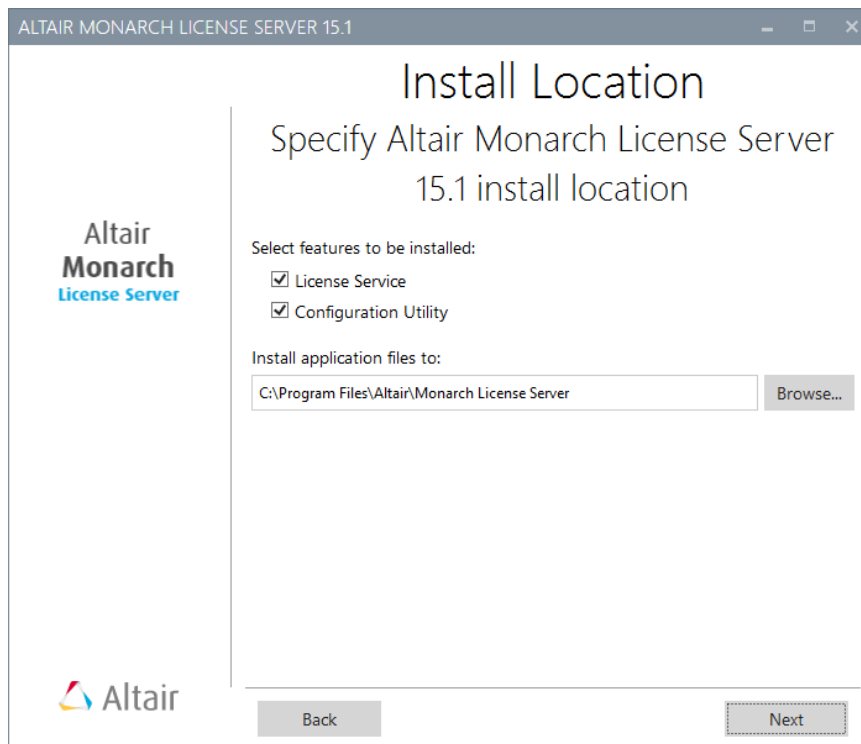
2. Click **Next**.

The *License Agreement* screen appears.



3. Read the license agreement. If you agree with its terms, select the check box **I accept the terms in the License Agreement** and then click **Next**.

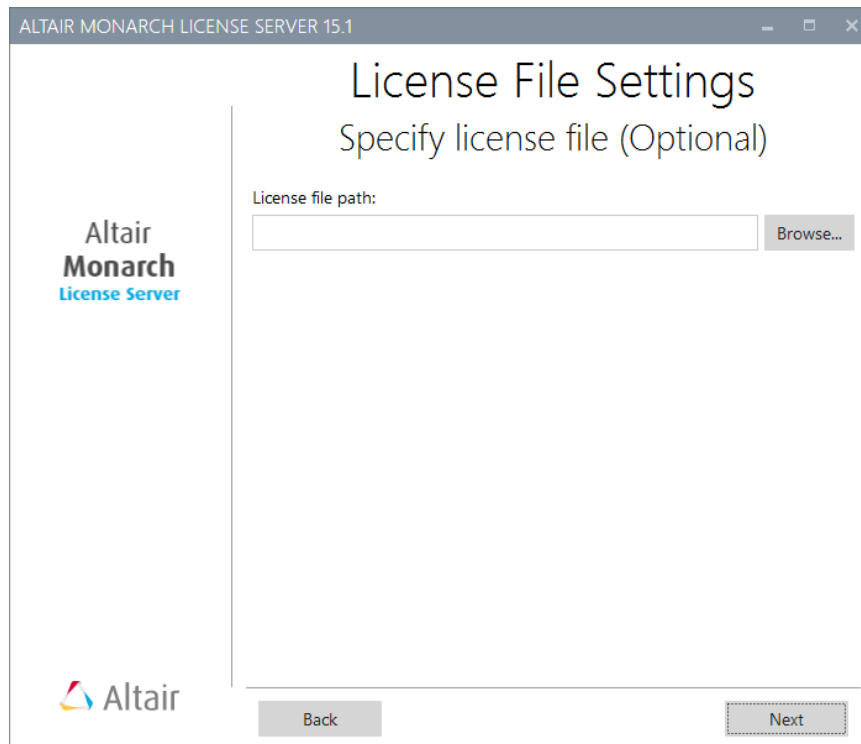
4. The *Install Location* screen appears.



5. Do one of the following:

- If you want to install both of the Datawatch License Server v15.1 components on the local machine, leave the current selection as is and then click **Next**.
- If you want to install only one component on the local machine, deselect the component that you do not want to install and then click **Next**.

If you opted to install the License Service either in addition to or instead of the Configuration Utility, the *License File Settings* screen displays.



6. Specify the path to the license file of the Datawatch product you wish to license and then click **Next**.

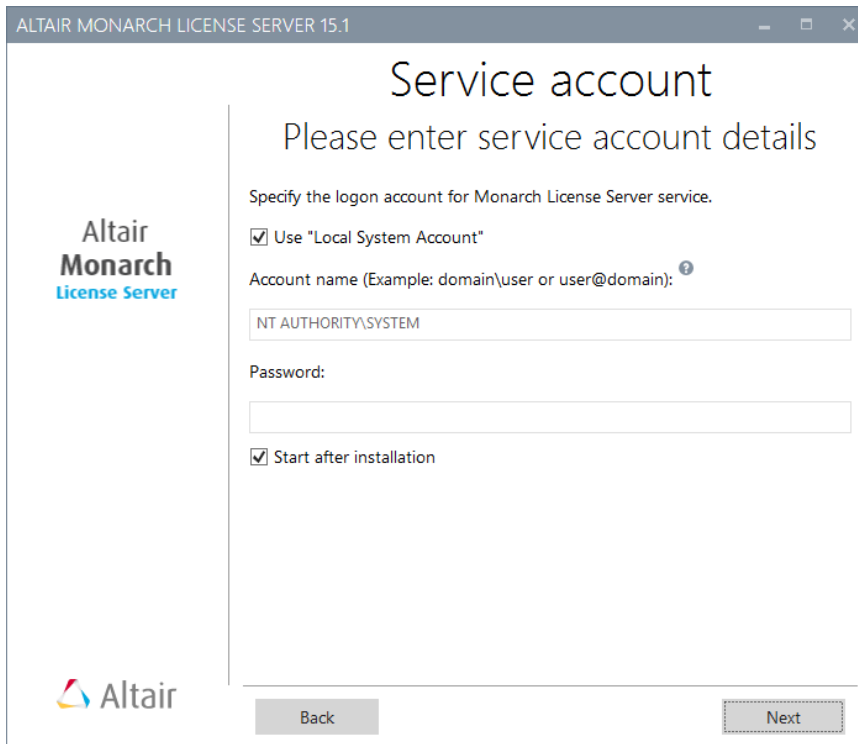


### NOTE

This license will be used as the default license for the Datawatch product instances.

If you do not provide a license at this point, you can do so when configuring server instances in License Server.

The *Service Account* screen displays.



ALTAIR MONARCH LICENSE SERVER 15.1

## Service account

Please enter service account details

Specify the logon account for Monarch License Server service.

Use "Local System Account"

Account name (Example: domain\user or user@domain): <sup>?</sup>

NT AUTHORITY\SYSTEM

Password:

Start after installation

Altair  
Monarch  
License Server

Altair

Back Next

7. Select the **Use "Local System Account"** check box if you want to use a local system account. Otherwise, clear the check box and specify a custom account name and password.



### NOTE

If using Active Directory Authentication, ensure that an account with the appropriate credentials to verify users in the desired domain or domains is used.

8. If you want to start the License Service component immediately after installation, select the **Start after installation** check box. Click **Next** when you are finished.

The License Service Settings screen displays.

ALTAIR MONARCH LICENSE SERVER 15.1

## License Service Settings

Specify scheme, certificate subject name and port

Altair Monarch License Server

Scheme:

Certificate Subject Name:

SPN <sup>?</sup>

Port:

Create Firewall Exception  
Uncheck if you prefer to create a firewall exception manually

Altair

Back Next

9. Specify the network communication security settings for the License Service component:

- Select one of the following security schemes:
  - **Http** – the standard security scheme.
  - **SecuredHttp** – this security scheme supports encrypted communication via certificates.
- If you selected the **SecuredHttp** scheme, choose a security type to apply:
  - **Windows** – used when License Server and the machine in which the Monarch instance to be licensed belong to the same or trusted domains
  - **Anonymous** – used when License Server and the machine in which the Monarch instance to be licensed do not belong to the same or trusted domains
- Provide the subject name of a valid certificate for the security type you selected. The default subject name is **localhost**.



## NOTE

You must have the certificate already installed on the local machine. For Anonymous connections, an X.509 certificate is required and the private key must be available

- Enter the number of the port on which Datawatch License Server will be running.
- If you select the **Create Firewall Exception** check box, a firewall exception will be created during installation.

10. Click **Next**.

The Database Settings screen displays.

The screenshot shows a window titled "ALTAIR MONARCH LICENSE SERVER 15.1". The main heading is "Database Settings" with the instruction "Specify the location for the Monarch License Server database". On the left is the "Altair Monarch License Server" logo. The "Database path:" label is above a text box containing "C:\ProgramData\Datawatch\License Server" and a "Browse..." button. At the bottom are "Back" and "Next" buttons. The Altair logo is also in the bottom left corner.

11. Specify the path to the License Server database to be created during the installation and click **Next**. This database is used to store instances, users, and licenses. You can either use the default path or specify a custom one by clicking **Browse**.





## NOTE

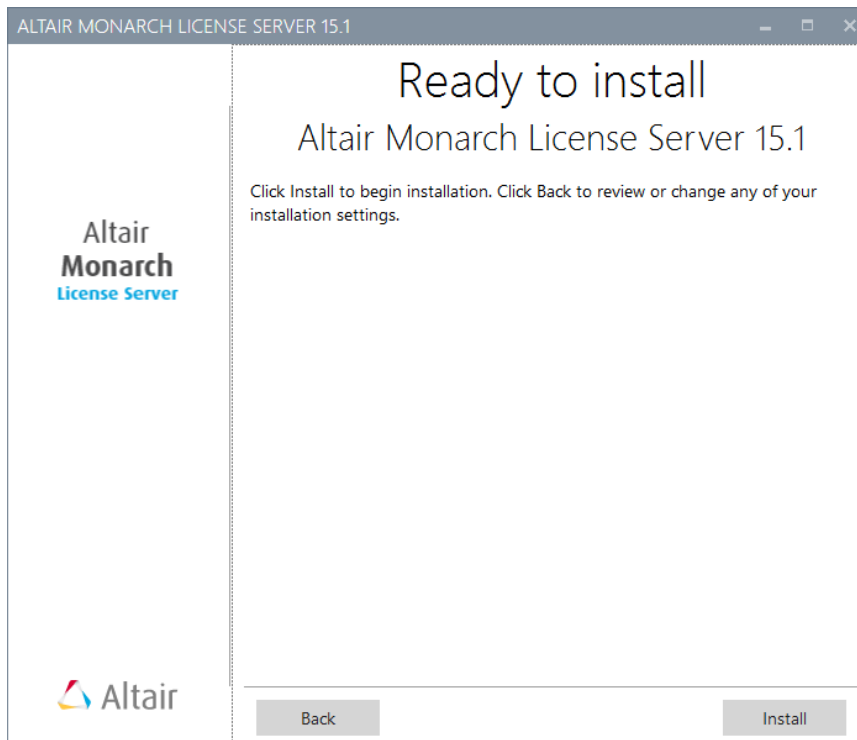
During the installation, the Setup Wizard creates a system admin user account and adds it to the database with the default name **admin** and the default password **password**. You must use these credentials on the first connection to Datawatch License Server. The credentials for system administrator may be changed later to avoid unauthorized use of the application. For details, refer to [Datawatch License Server v15.1 User Guide](#). The system administrator password cannot be recovered if forgotten, so ensure that it is recorded safely and securely.



## NOTE

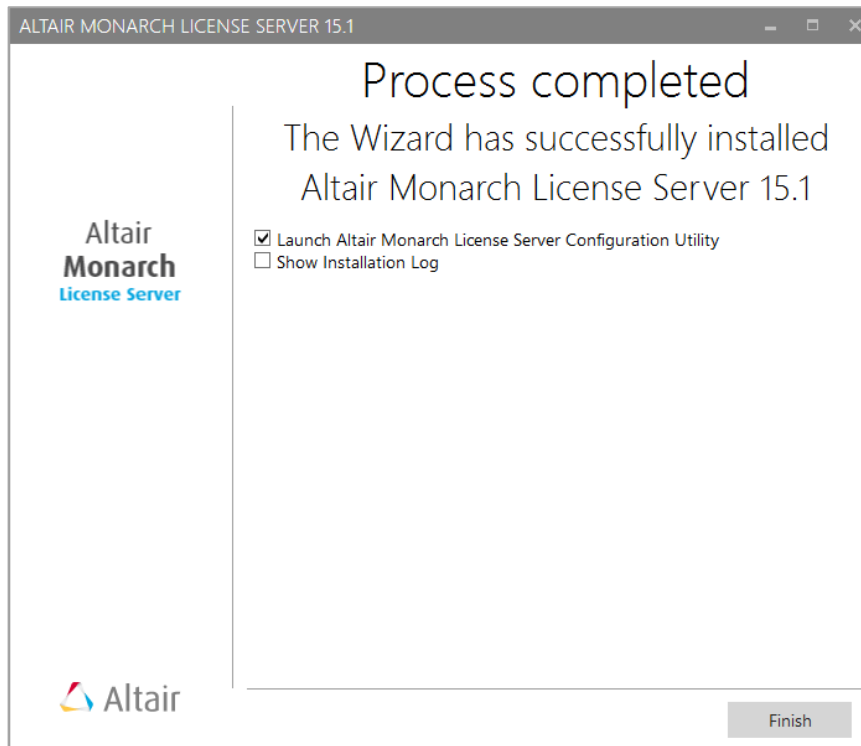
If you opted to install only the Configuration Utility component in Step 4, the Setup Wizard skips installation settings for the License Service component (Steps 5-10) and takes you directly to Step 11.

The following screen appears.



12. Click **Install** to begin the installation.

After the installation is complete, the following screen appears.



13. Click **Finish** to exit the Setup Wizard.

Once you have installed the application, the License Service component is automatically started and is running in the background mode. The Configuration Utility component is accessible via the Windows **Start** menu, under **All Programs > Datawatch License Server > Datawatch License Server Configuration Utility**.



#### **NOTE**

The License Service component is configured to start in automatic delayed mode at system startup. If it fails to start, go to Windows **Start** menu > **Administrative Tools > Services**, right-click **Datawatch License Service** and select **Start**.

# Installation Maintenance

This section describes how to:

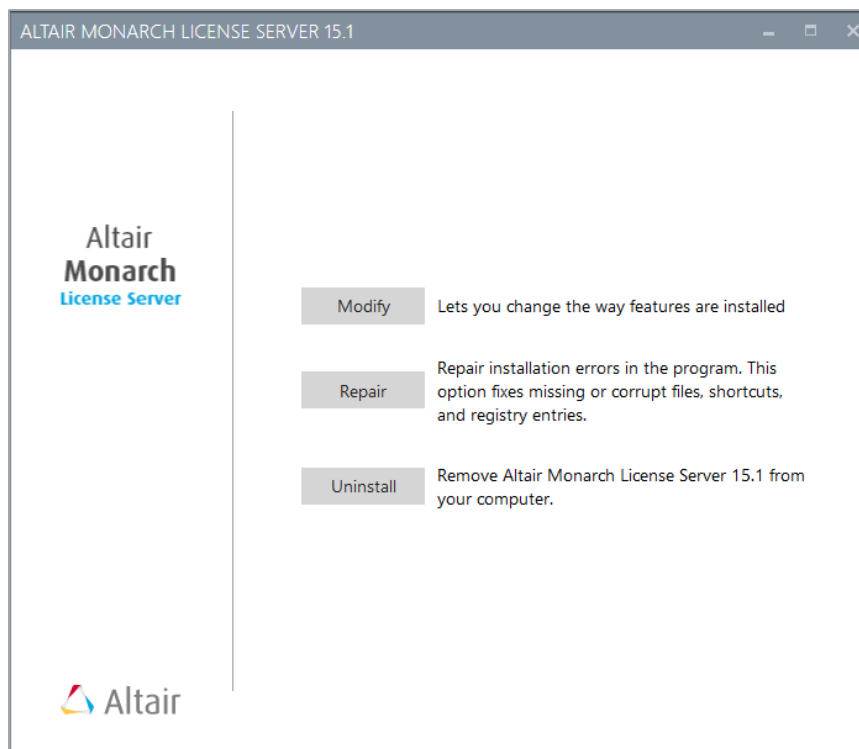
- ❑ Add or remove Datawatch License Server components on a computer
- ❑ [Repair a damaged installation](#)
- ❑ [Uninstall the Datawatch License Server application](#)

## Adding or Removing Components

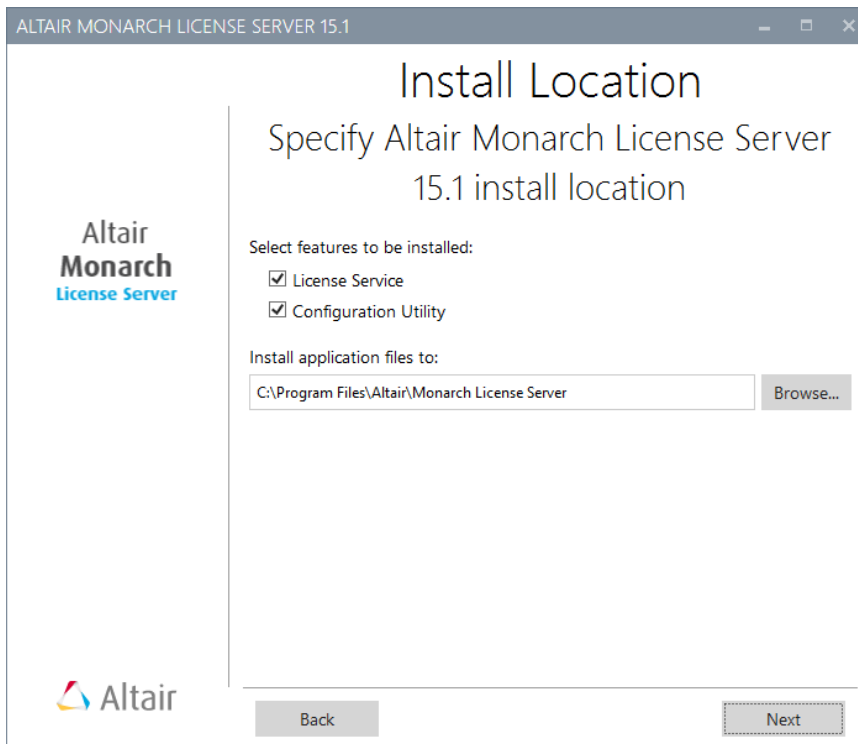
This function allows you to add or remove the Datawatch License Server v15.1 components – License Service and Configuration Utility – in case you use a distributed installation.

Steps:

1. Start the Datawatch License Server v15.1 Setup Wizard by doing one of the following:
  - Run the **DatawatchLicenseServer15Installer.exe** file from your installation media.
  - In the Windows Control Panel, go to **Programs and Features**, select **Datawatch License Server**, and then click **Uninstall**.

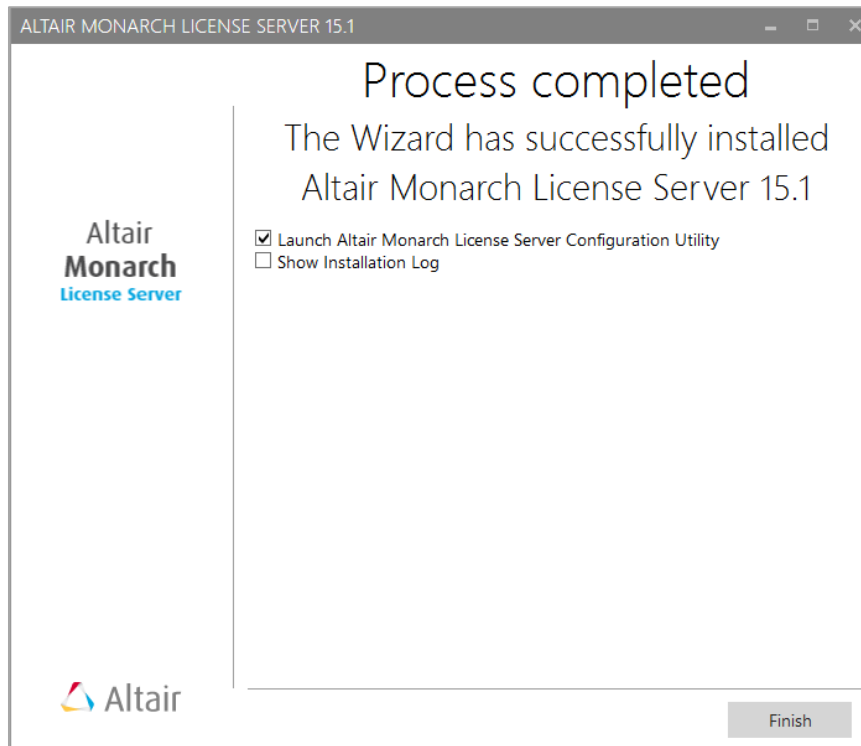


2. Click the **Modify** button. The *Install Location* screen appears. This screen shows the currently installed components, the disabled components, and the installation location.



3. Select the components you want to install or deselect the components you want to remove and click **Next** to display the **Ready to Install** screen.
4. Click **Install** to change the way features are installed.

When the maintenance is complete, the following screen appears.



5. Click **Finish** to exit the Setup Wizard.

# Repairing a Damaged Installation

The Repair function of the Setup Wizard repeats the last installation to replace missing or damaged files of Datawatch License Server v15.1. Use this option if you accidentally deleted some Datawatch License Server v15.1 system files or if Datawatch License Server v15.1 becomes inoperable because of these damaged files.



## NOTES

The Repair function removes all changes you made in property files or registry settings. Therefore, before beginning a repair, backup all property files and registry keys.

**WARNING!** Do not try to work with the system registry if you are unfamiliar with it. Incorrect actions can make your system unusable.

### Steps:

1. Start the Datawatch License Server v15.1 Setup Wizard by doing one of the following:
  - Run the **DatawatchLicenseServer15Installer.exe** file from your installation media.
  - In the Windows Control Panel, go to **Programs and Features**, select **Datawatch License Server**, and then click **Uninstall**.
2. In the Datawatch License Server v15.1 Setup Wizard that appears, click **Repair**. Follow the instructions on the screen. When the repair is complete, the corresponding message appears.
3. Click **Finish** to exit the Setup Wizard.

# Uninstalling the Application

This function removes the Datawatch License Server v15.1 components and files installed on the computer except the application database. You can remove the Datawatch License Server database manually from the location specified during the installation.

## Steps:

1. Start the Datawatch License Server v15.1 Setup Wizard by doing one of the following:
  - Run the **DatawatchLicenseServer15Installer.exe** file from your installation media.
  - In the Windows Control Panel, go to **Programs and Features**, select **Datawatch License Server**, and then click **Uninstall**.
2. In the Datawatch License Server v15.1 Setup Wizard that displays, click the **Uninstall** button and then follow the instructions on the screen. When the operation is complete, the corresponding message appears.
3. Click **Finish** to exit the Setup Wizard.

You can also remove all Datawatch License Server v15.1 components from your system by selecting **Uninstall** in the Windows Start menu under **All Programs > Datawatch License Server**. When you do so, a message box asking you to confirm uninstallation displays. Confirm your intent to uninstall the application by clicking **Yes** on the message box. Uninstallation proceeds.

# Upgrading Your License Server Installation

You can upgrade your License Server install from a lower version to 15.0 by simply installing the newer version over the old one. No uninstallation of the older version is necessary, and all of your previous settings are maintained.



# Configuration

After installing Datawatch License Server v15.1, you can manually edit some of its parameters in the configuration file.

## Datawatch License Server Service

The configuration file is Datawatch.LicenseServer.Service.LicenseService.exe.config.

The default path to the configuration file is as follows: C:\Program Files\Datawatch\Datawatch License Server\Service\Datawatch.LicenseServer.Service.LicenseService.exe.config.

The parameters listed below are located in the <appSettings> of the Datawatch License Server Service. The recording format of each of the parameters is as follows:

```
<add key="parameterName" value="parameterValue" />
```

PARAMETER NAME	DESCRIPTION	DEFAULT VALUE
Scheme	This setting specifies the security scheme. It can be either Http or SecuredHttp.	Http
MessageSecurityType	This setting specifies the type of SecuredHttp message security. Valid values are Windows and MSAC	Windows
LicenseServicePort	This setting specifies the port on which Datawatch License Server Service is running.	51515
CertificateSubjectName	This setting specifies the subject name of the SSL certificate to use with the SecuredHttp scheme.	localhost

# Datawatch License Server Configuration Utility

The configuration file is Datawatch.LicenseServer.ConfigurationUtility.Shell.exe.config.

The default path to the configuration file is as follows: C:\Program Files\Datawatch\ Datawatch License Server\Shell\Datawatch.LicenseServer. ConfigurationUtility.Shell.exe.config.

The parameters listed below are located in the <appSettings> of the Datawatch License Server Configuration UtilityConfiguration Utility.

The recording format of each of the parameters is as follows:

```
<add key="parameterName" value="parameterValue" />
```

PARAMETER NAME	DESCRIPTION	DEFAULT VALUE
Scheme	This setting specifies the security scheme. It can be either Http or SecuredHttp.	Http
LicenseServicePort	This setting specifies the port on which Datawatch License Server Service is running.	51515

